

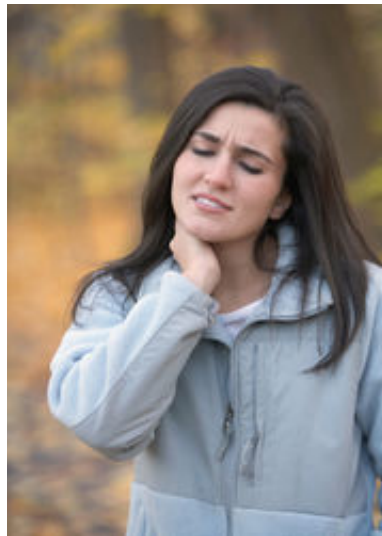


# POSTURE PUMP<sup>®</sup> DISC HYDRATOR<sup>®</sup>



## Decompress, Shape & Lubricate™

# Look Familiar?



# Posture Pump® Scoligon® (Model 1700)

(Adjustable dual air cells work neck and upper back-extra strength) Fitted and sold by healthcare professionals.

Our *most advanced* cervical model. Upgraded from the Model 1400-D to perform *lateral flexion decompression*. *Dual adjustable* EED® air cells\* allow simultaneous postural correction in the **AP and Lateral Planes**. Rotating Wedge Component (RWC) allows practitioners to decompress the upper thoracic spine *unilaterally* on a (-Y/+Z) mid vector while the cervical spine is under lordotic decompression (EED®). In the neutral position (RWC) provides *increased* mid-vectored *linear* decompression to the upper thoracic hyper-kyphotic (**hump**) region. *New Comfort Visor™* gently molds to the shape of the forehead (no chin or jaw contact). *Does not* hyper-extend the neck. Decompresses & hydrates discs at **MRI Proven\*\*** bulge resorption pressure levels while shaping & restoring the cervical curve. *Versatile, powerful and comfortable*. *Scoligon®* provides corrective deep relief for **AP and Lateral** postural aberrations.

- Decreases Disc Bulging & Subarachnoid Indentations at MRI Proven\* Resorption Pressure Levels
- Addresses AP and Lateral Postural Aberrations
- Rotating Wedge Component applies lateral flexion decompression
- Applies Adjustable Mid-Vectored Linear Decompression to Upper Thoracic Humps
- Relieves Painful Neck and Upper Back Stiffness, Headaches and Fatigue
- Decompresses & Hydrates Cervical Discs
- Shapes & Restores the Cervical Curve
- Reduces and Corrects *Forward Head, Neck and Upper Back (Hump) Posture*
- Improves Flexibility and Ranges of Motion
- Lightweight, Easy to Operate & Travel With
- Made in the USA & Built to Last

\*Expanding Ellipsoidal Decompression (EED®)

Copyright 2017 POSTURE PRO, Inc. • U. S. Patent Numbers 5,713,841 • 5,906,586 • D508,566S • 7,060,085,B2 • 8,029,453,B2 • 8,734,372 • 8,764,693 • 9,095,419 • 9,241,820. Other patents pending. Consult your health care professional before beginning. Prices and colors subject to change without notice. Posture Pump® products are not designed to diagnose or cure disease. Posture Pump®, Neck Pump®, Back Pump®, Scoligon®, Disc Hydrator®, Dual Disc Hydrator®, Penta Vec®, Expanding Ellipsoidal Decompression (EED®), Elliptical Back Rocker™, Decompress, Shape & Lubricate™, Be Flexible, Stand Taller, Feel Younger™



Copyright 2017 POSTURE PRO, Inc. • U. S. Patent Numbers 5,713,841 • 5,906,586 • D508,566S • 7,060,085,B2 • 8,029,453,B2 • 8,734,372 • 8,764,693 • 9,095,419 • 9,241,820.  
Other patents pending. Consult your health care professional before beginning. Prices and colors subject to change without notice. Posture Pump® products are not designed to  
diagnose or cure disease. Posture Pump®, Neck Pump®, Back Pump®, Scoligon®, Disc Hydrator®, Dual Disc Hydrator®, Penta Vec®, Expanding Ellipsoidal Decompression (EED®),  
Elliptical Back Rocker™, Decompress, Shape & Lubricate™, Be Flexible, Stand Taller, Feel Younger™



Copyright 2017 POSTURE PRO, Inc. • U. S. Patent Numbers 5,713,841 • 5,906,586 • D508,566S • 7,060,085,B2 • 8,029,453,B2 • 8,734,372 • 8,764,693 • 9,095,419 • 9,241,820. Other patents pending. Consult your health care professional before beginning. Prices and colors subject to change without notice. Posture Pump® products are not designed to diagnose or cure disease. Posture Pump®, Neck Pump®, Back Pump®, Scoligon®, Disc Hydrator®, Dual Disc Hydrator®, Penta Vec®, Expanding Ellipsoidal Decompression (EED®), Elliptical Back Rocker™, Decompress, Shape & Lubricate™, Be Flexible, Stand Taller, Feel Younger™

# Posture Pump® Disc Hydrator®- Model 1100-SX

(Single neck air cell - *extra strength*) Fitted and sold by healthcare professionals.

Upgraded from the Model 1000 to be more comfortable and effective. *New Comfort Visor™* gently molds to the shape of the forehead (no chin or jaw contact). *Does not* hyper-extend the neck. **Single EED®** air cell\* decompresses & hydrates discs at **MRI Proven\*\*** bulge resorption pressure levels while shaping & restoring the cervical curve. *Powerful, comfortable, and corrective deep relief*

- Decreases Disc Bulging & Subarachnoid Indentations at MRI Proven\*\* Resorption Pressure Levels
- Relieves Painful Neck Stiffness, Headaches and Fatigue
- Shapes & Restores the Cervical Curve
- Decompresses & Hydrates Cervical Discs
- Reduces & Corrects *Forward* Head & Neck Posture
- Improves Flexibility and Ranges of Motion
- Lightweight, Easy to Operate & Travel With
- Made in the USA & Built to Last

Copyright 2017 POSTURE PRO, Inc. • U. S. Patent Numbers 5,713,841 • 5,906,586 • D508,566S • 7,060,085,B2 • 8,029,453,B2 • 8,734,372 • 8,764,693 • 9,095,419 • 9,241,820. Other patents pending. Consult your health care professional before beginning. Prices and colors subject to change without notice. Posture Pump® products are not designed to diagnose or cure disease. Posture Pump®, Neck Pump®, Back Pump®, Scoligon®, Disc Hydrator®, Dual Disc Hydrator®, Penta Vec®, Expanding Ellipsoidal Decompression (EED®), Elliptical Back Rocker™, Decompress, Shape & Lubricate™, Be Flexible, Stand Taller, Feel Younger™



Posture Pump® Disc Hydrator® Model 1100-SX (single neck air cell - extra strength)

# Posture Pump® Disc Hydrator® - Model 1100-S

(Single neck air cell) Retail Model

Upgraded from the Model 1000 to be more comfortable and effective. *New Comfort Visor™* gently molds to the shape of the forehead (no chin or jaw contact). *Does not* hyper-extend the neck. **Single** EED® air cell\* decompresses & hydrates discs at *moderate* pressure levels while shaping & restoring the cervical curve for *comfortable, corrective deep relief*.

- Decreases Disc Bulging
- Relieves Painful Neck Stiffness, Headaches and Fatigue
- Shapes & Restores the Cervical Curve
- Decompresses & Hydrates Compressed Discs
- Reduces & Corrects *Forward* Head & Neck Posture
- Improves Flexibility and Ranges of Motion
- Lightweight, Easy to Operate & Travel With
- Made in the USA & Built to Last

Copyright 2017 POSTURE PRO, Inc. • U. S. Patent Numbers 5,713,841 • 5,906,586 • D508,566S • 7,060,085,B2 • 8,029,453,B2 • 8,734,372 • 8,764,693 • 9,095,419 • 9,241,820. Other patents pending. Consult your health care professional before beginning. Prices and colors subject to change without notice. Posture Pump® products are not designed to diagnose or cure disease. Posture Pump®, Neck Pump®, Back Pump®, Scoligon®, Disc Hydrator®, Dual Disc Hydrator®, Penta Vec®, Expanding Ellipsoidal Decompression (EED®), Elliptical Back Rocker™, Decompress, Shape & Lubricate™, Be Flexible, Stand Taller, Feel Younger™



Posture Pump® Disc Hydrator® Model 1100-S (single neck air cell)

# Posture Pump® Disc Hydrator® MODEL 1100-SX VS. MODEL 1100-S

## MODEL 1100-SX

(Healthcare professional model)

- Upgraded from the Model 1000 to be more comfortable and effective. **New Comfort Visor™** gently molds to the shape of the forehead (no chin or jaw contact). **Does not** hyper-extend the neck. **Single EED®** air cell\* decompresses & hydrates discs at **MRI Proven\*\*** bulge resorption pressure levels while shaping & restoring the cervical curve. *Powerful, comfortable, and corrective deep relief*

## MODEL 1100-S

(Retail model sold to General Public)

- Upgraded from the Model 1000 to be more comfortable and effective. **New Comfort Visor™** gently molds to the shape of the forehead (no chin or jaw contact). **Does not** hyper-extend the neck. **Single EED®** air cell\* decompresses & hydrates discs at **moderate** pressure levels while shaping & restoring the cervical curve for *comfortable, corrective deep relief. This unit has approx. 30% less pressure and is sold to re sellers who sell directly to general public.*



# Posture Pump® Disc Hydrator® Elliptical Back Rocker (Model 2000)

- 2 uniquely angled air cells create **multi-vectored force**, hydrating discs and shaping the spine
- Relieves **back pain, stiffness and restores motion**
- Built-in **Rocking Mechanism** allows you to work your abdominal muscles while shaping & strengthening the lower back



Copyright 2017 POSTURE PRO, Inc. • U. S. Patent Numbers 5,713,841 • 5,906,586 • D508,566S • 7,060,085,B2 • 8,029,453,B2 • 8,734,372 • 8,764,693 • 9,095,419 • 9,241,820.  
Other patents pending. Consult your health care professional before beginning. Prices and colors subject to change without notice. *Posture Pump® products are not designed to diagnose or cure disease.* Posture Pump®, Neck Pump®, Back Pump®, Scoligon®, Disc Hydrator®, Dual Disc Hydrator®, Penta Vec®, Expanding Ellipsoidal Decompression (EED®), Elliptical Back Rocker™, Decompress, Shape & Lubricate™, Be Flexible, Stand Taller, Feel Younger™

# Posture Pump® Disc Hydrator® Deluxe Full Spine (Model 4100-SX) Healthcare Provider Model



Combines neck Model 1100-SX (Single Cell Extra Strength and back Model 2000. New Comfort Visor™ gently molds to the shape of the forehead (no chin or jaw contact). Does not hyper-extend the neck. Single EED® air cell\* decompresses and hydrates cervical discs at MRI Proven\* Resorption Pressure Levels, while shaping & restoring the cervical (neck) curve for comfortable, corrective deep relief. Simultaneously, two opposing air cells in the lower back unit get to the cause of pain and stiffness fast. Leatherette comfort pad attaches both neck and back units into one. Conveniently folds & locks together for easy travel.

- - Decreases Disc Bulging & Subarachnoid Indentations at MRI Proven\* Resorption Pressure Levels
- - Relieves Painful Neck and Low Back Stiffness, Headaches and Fatigue
- - Shapes & Restores Healthy Cervical and Lumbar Curves
- - Decompresses and Hydrates Discs in Neck and Low Back Regions
- - Reduces & Corrects Forward Head & Neck Posture
- - Built-in Rocking Mechanism Exercises Abdominal Muscles (strengthens core) While Shaping & Strengthening the Lower Back
- - Reduces & Corrects Forward Head & Neck Posture
- - Improves Flexibility and Ranges of Motion
- - Lightweight, Easy to Operate & Travel With (weighs 6 lbs.)
- - Made in the USA & Built to Last

\*Expanding Ellipsoidal Decompression (EED®)

## Posture Pump® Model 4100-SX



www.posturepump.com • sales@posturepump.com  
1-800-632-5776 • 714-847-8607

## Posture Pump® Penta Vec™ (Model 2500)

With the lower spine under **EED®**(Expanding Ellipsoidal Decompression), the lumbosacral region is gently though powerfully **translated** along the **Y-axis** and simultaneously **rotated** and **unwound** on the **X-axis**.

- Unique blend of **five simultaneous force vectors** cannot be manually duplicated
- Simply stated, the **Penta Vec®2500**, lifts and expands the **lumbar spine while the sacrum and pelvis are rotated up and translated away**. The feeling is one of lightness and freedom from the monotonous **compressive coiling in the lower discs and joints**



patents pending. Consult your health care professional before beginning. Prices and colors subject to change without notice. Posture Pump® products are not designed to diagnose or cure disease. Posture Pump®, Neck Pump®, Back Pump®, Scoligon®, Disc Hydrator®, Dual Disc Hydrator®, Penta Vec®, Expanding Ellipsoidal Decompression (EED®), Elliptical Back Rocker™, Decompress, Shape & Lubricate™, Be Flexible, Stand Taller, Feel Younger™

# Posture Pump® Indications for use

- Cervical kyphosis / lordotic curve loss
- Compressed discs
- Degenerative joints changes/DJD
- Bulging or herniated discs
- Subarachnoid indentations
- Hypomobility
- Joint pain and/or stiffness
- Discogenic pain
- Muscle tightness/spasms
- Ligament encroachment
- Cervical nerve root swelling or compression
- Narrowing foramen
- Headaches
- Separates the anterior, center and posterior discs in a ratio coinciding with their natural wedged spacing.
- Reinforcement of the normal biomechanics of the cervical spine (Cervical Lordosis)

# Posture Pump® Contraindications and Cautions – Apply to all Posture Pump® Products

## **Contraindications:**

- Fracture
- Serious pathology, disease or malignancy
- Extruded disc fragmentations
- Spinal instability
- Surgical implants
- Inflammatory disease and/or infections
- Spinal cord compression
- Acute traumatic injury
- Spreading and/or aggravation of patient's symptoms

## **Cautions:**

**IMPORTANT:** Posture Pump® is proven in MRI and x-ray studies to provide high level disc expansion and spinal shaping. We recommend that it be used with the guidance of a healthcare professional. If the user tolerates the selected unit, then user is to carefully follow cautions and instructions below.

1. Read instructions completely before using and follow all cautions.
2. Do not use this unit without first consulting your doctor. Specific joint, nerve, disc, vascular and other disorders or weaknesses can be aggravated and worsened.
3. Do not use if you have implanted spinal hardware.
4. Do not use if you are pregnant.
5. Do not use if you are injured.
6. Never inflate unit to the point of pain.
7. Never cover up or block off open ends of hand pump (*Safety Release Valve*).
8. Never reposition your body when neck unit is inflated. When using neck **and** back unit together, always apply the **back unit first**. When **all** movement with back unit is **complete**, apply neck unit. Completely **deflate** neck unit and refasten head restraint **before** moving back unit.
9. If Comfort Visor™ restraint is slipping off forehead, lightly moisten inside padded area to help it adhere & mold to the shape of your head.
10. If pain results during treatment, discontinue use immediately and consult your doctor.
11. If your back is sensitive or extremely stiff, first use the unit on your bed/mattress. As your flexibility increases, you may wish to graduate to a flat, firm surface.
12. An aggressive workout with the Posture Pump® may temporarily cause soreness. If so, reduce the intensity and duration of your treatment.
13. Keep unit out of reach of children at all times.

# Frequently Asked Questions

## Why do I need a Posture Pump® Disc Hydrator®?

Posture Pump® gently decompresses shapes and hydrates the discs in your neck and back. When the neck and back lose their natural curved shape, the soft discs that are in between the vertebrae become compressed and rich lubricating fluid is unable to penetrate and hydrate the discs. This causes premature aging in the form of stiff dry joints. Posture Pump® counteracts that by lifting, stretching, decompressing, hydrating and shaping the neck and back into its “vital” natural curved shape.

## How does Posture Pump® work?

With easy to use hand pumps and uniquely angled air cells, expansion and contraction (up and down motion) of these air cells create alternating hydration of the spinal discs and joints. When the air cells are left inflated for longer periods of time (15-20 min.), postural restoration occurs.

## How long does it take to start seeing or feeling results from Posture Pump®?

Everyone is different. Some people feel immediate relief and a decrease in symptoms right away. And others, depending on symptoms and issues, may take longer and have gradual relief of symptoms over time. But stick with it.

## What is Expanding Ellipsoidal Decompression (EED®)?

EED® was invented and patented by Posture Pump. Under EED®, high level joint separation is achieved by expansion of the elliptical shaped air cells in to the curves of the neck and back. As EED® occurs; bulging disc material is drawn **back** toward the disc proper and **away** from the spinal cord and nerves. It aligns joints in a curved shape while increasing disc height in a ratio corresponding to the disc’s natural wedged shape. These natural spinal curves of the neck and back are essential.

## Is there any Research on Posture Pump®?

YES! Posture Pump® has TWO IRB Approved MRI Studies that were conducted by Dr. C. Norman Shealy, M.D., Ph.D., neurosurgeon, researcher and author. Studies showed that Posture Pump® decompressed, shaped and lubricated the discs and joints of the spine as well as showing disc bulge resorption. Our 2008 MRI Study compared it to a commonly used form of traction and Posture Pump® **improved** the cervical (neck) curve in **72% of the study subjects** versus only **8%** in the commonly used **traction device**. Posture Pump® also **increased** the average disc height **twice as much** as the commonly used form of traction. Dr. Shealy stated “Considering the cost, effectiveness and ease of therapy, Posture Pump® appears to be the first choice of treatment for cervicogenic pain and cervicogenic headache.” Please go to our **Research Study** section on our website to view real MRI’s from the studies, read the full studies and view other case studies conducted on our products. Posture Pump® is the real thing. Don’t be fooled by other imitation products. Nothing works like Posture Pump. Nothing!

## Where are Posture Pumps® made?

We are very proud to say that Posture Pump® products are **100% made in the USA**. Our products are made of quality material, hand assembled, tested and durable. We stand behind our quality made products.



# Posture Pro, Inc.



## RETURN POLICY

Posture Pro, Inc. maintains a 60 Day Return Policy for all Distributors, Wholesalers, DME Providers and Health Care Professionals. This enables them to provide their customers with a 30 Day Return Policy based on the invoice date.

- Original order form required for all returns.
- Shipping/Handling charges cannot be refunded when returning items.
- Return items via mail or shipping company. (please insure your package.)
- \*Other restrictions may apply.

## WARRANTY POLICY

Posture Pro, Inc. maintains a six month warranty on all manual units. If a unit is found to be defective during that time, the customer must ship it back to our warehouse and it will be fixed and shipped back to the customer. If it is after the six month warranty, we will refurbish the unit for a nominal fee. Please verify the date stamp on the unit to see if it is under warranty. Please see photos below for the location of the date stamp.



## RECALL POLICY

Posture Pro, Inc. will recall if necessary, all product, by either the purchase order or the invoice date.

### **Regulatory Status:**

Posture Pump® is listed with the FDA as a Class 1 Device. The manufacturer is Posture Pro, Inc., located in Huntington Beach, CA and was established in 1994. Being a Class 1 Device there was no need to go through the 510K process. Posture Pump® classification is: Apparatus, Traction, Non-powered, Product Code: HST. Regulatory # 888.5850. Medical Specialty: Orthopedic.

Posture Pro, Inc. 16421 Gothard St., Ste # D Huntington Beach, CA 92647 800-632-5776 Fax 714-375-4183  
[www.posturepump.com](http://www.posturepump.com) [shipping@posturepump.com](mailto:shipping@posturepump.com)

# Testimonials

- “While a student, I heard many conflicting opinions throughout the profession arguing whether or not it was possible to restore a normal cervical curve once it had been lost. To many of the chiropractors with whom I came in contact, curve restoration in a neck that had either lost its curve, or worse, had gone kyphotic, was an impossibility. Once I began my internship at Parker, I began to agree with the naysayers. Then I saw a Posture Pump® demonstration at a Parker Seminar and I bought one. My wife and I loved it. I was then granted permission by the Parker Clinic to prescribe a Posture Pump® to a whiplash victim who had a kyphotic neck whose curve measured - 15 degrees. She had been under the care of an MD for six weeks and then under the care of another chiropractor for eight weeks before coming to see me. She had x-rays taken by each of the three of us each time she began care. Each of the three lateral cervical neutral views showed a neck that was clearly kyphotic. After 6 weeks of using the Posture Pump® three times per week for fifteen minutes along with the Pettibon technique, this previously unresponsive patient was getting dramatic relief. Her improvement was so impressive that I decided to do the unspeakable: I took a post x-ray!! With the angle of her mandible identical to the first lateral cervical neutral taken at the Parker Clinic, her lordotic curve measured +26 degrees!!! Several of the staff doctors gathered around the view box and began asking me “how the heck did you do that?!! Three weeks later, after she was rear-ended again at 50+ m.p.h., I was shocked to see while analyzing her new films that she had not lost a bit of her curve restoration!! COUNT ME SOLD!!” - Dr. EV, Irving, Texas
- “The Posture Pump® has been an incredible addition to our office. Our patients have benefited tremendously and the results have been overwhelming. Our office has always implemented cervical and lumbar traction devices along with the chiropractic adjustments, but nothing has come close to the Posture Pump®. Our patients feel immediate relief and enjoy participating in their health care. The most remarkable thing about the Posture Pump® is the improvement of the cervical lordosis. It’s inspiring not only to the doctors, but especially to the patients when their 100% loss of curve has improved by 50-70% in just a few months. I’m excited to see similar results with the Full Spine Attachment.”- Dr. HS, Oyster Bay, New York
- “In all my years of practice and teaching national seminars, rarely have I personally endorsed a product. However, I feel so strongly about the Posture Pump® that I give it my “WHOLE HEARTED” endorsement for safe patient rehabilitation. I’ve found Posture Pump® to be durable, user friendly, efficient and effortless. My patients love this state of the art product. Whether used in the office, at home or both, my objective clinical results are dramatic! Also, third party reimbursement is simple based on clinical evidence.” - KM, A.S., B.S., D.C., D.C.T., F.I.C.A., F.M.C.C.
- “After a clinical trial in my office I am amazed at the incredible changes in restoration of the cervical curve from the Posture Pump®. My patients are amazed at how easy it is to get in and out of and how fun it is to use. When I lecture across the country I have had numerous D.C.’s comment on how happy they are with Posture Pumps® results in cervical curve restoration and the number of sales to their patients for home care. This is truly a new innovative support that all chiropractors should use in their offices. Thank you for being on the cutting edge.”- MC, D.C., Q.M.E., C.C.S.T.
- “As a chiropractor knows, your function is directly related to your structure. Restoring the normal cervical lordotic curve has been one of the most important goals in our office. By using the Posture Pump®, especially during the initial intensive care period, we have noticed dramatic improvements in the cervical lordotic curve upon re-examinations. I have found that patients with lordotic s-curves respond much more rapidly using the Posture Pump®, than in the past when it wasn’t being used. Patients love using the Posture Pump® because it is easy to use and it feels so good! If your goal is to correct the cervical curve and you post x-ray your patients, the Posture Pump® is a must have!”- Dr. DV, Huntington Beach, California

For assistance with questions please  
contact Patti at Posture Pump®

Patti Clark

Posture Pro Inc.

16421 Gothard St., Ste # D

Huntington Beach, CA 92647

800-632-5776 • 714-847-8607

fax 714-375-4183

[patti@posturepump.com](mailto:patti@posturepump.com)

[www.posturepump.com](http://www.posturepump.com)